

**Celebrity X Cruises®**  
SAIL BEYOND®

SEWTRAVELRY  GNOME ANGEL®  
CURATED QUILTING SUPPLIES  RGE Travels  
www.rgetravels.com

*quilt*  
**addicts**  
anonymous

 HUNTER'S  
DESIGN STUDIO

*The Crafty Nomad*  
Patchwork & Quilting Education



**Departing May 2, 2024 Aboard Celebrity Apex  
13-Night Western Europe Transatlantic Cruise**



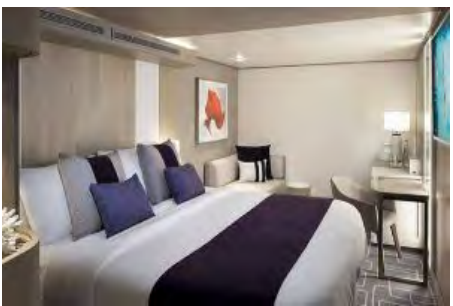
**Join Sewtravelry's Gnome Angel,  
Quilt Addicts Anonymous, and The Crafty  
Nomad on their Inauguration aboard the  
"Edge Class" Series Ship !**

Day Number	Day of Week	Date	Port	Arrival Time	Departure Time
1	Thursday	05/02/24	Fort Lauderdale, Florida		3:30 PM
2	Friday	05/03/24	At Sea		
3	Saturday	05/04/24	At Sea		
4	Sunday	05/05/24	At Sea		
5	Monday	05/06/24	At Sea		
6	Tuesday	05/07/24	At Sea		
7	Wednesday	05/08/24	At Sea		
8	Thursday	05/09/24	Ponta Delgada, Azores	9:00 AM	5:00 PM
9	Friday	05/10/24	At Sea		
10	Saturday	05/11/24	At Sea		
11	Sunday	05/12/24	Cork (Cobh), Ireland	8:00 AM	4:00 PM
12	Monday	05/13/24	Portland - Dorset, UK	10:00 AM	5:00 PM
13	Tuesday	05/14/24	Bruges (Zeebrugge), Belgium	9:00 AM	5:00 PM
14	Wednesday	05/15/24	Southampton, England	6:00 AM	





**"The real voyage of discovery consists not in seeking new landscapes, but in having new eyes."**



▶ 360° Virtual Tour



▶ 360° Virtual Tour



▶ 360° Virtual Tour



Inside Stateroom from \$3387.21 pp\*



Ocean View Stateroom from \$3535.21 pp\*  
\*Double occupancy



Infinite Veranda Stateroom from \$3876.21 pp\*



This cruise includes the following:

- 13 Night cruise aboard the Celebrity Apex in chosen stateroom accommodations.
- All meals on-board ship in complimentary dining venues, including 24 hour room service (convenience service fee may apply), Classic Beverage package; beers, spirits, cocktails, liqueurs, wines by the glass (up to \$10.00 USD each), sodas, juices, specialty coffees and bottled water.
- Gratuities, Surf WiFi Package.
- On-board entertainment including shows, discos, comedy clubs, bars, lounges, etc. provided by Celebrity Cruises.
- Age appropriate kids programming for toddlers, kids, and teens, use of all fitness facilities, pools, hot tubs, sports courts, etc.
- Taxes, fees and port charges.
- Exclusive daily group dinner dining and meet & greets with Sewtravelry's quilting and sewing team Angie Wilson of Gnome Angle, Stephanie Soebbing of Quilting Addicts Anonymous, and Jo Westfoot of Crafty Nomad.

*\*To participate and have access to this exclusive group event, the cruise must be booked with RGE Travels.*

*\*\* Optional custom group 1-Night Pre-cruise hotel/transfers/shop hop in Fort Lauderdale, FL. Optional custom group 3 -Night post-cruise hotel/transfer/shop hop tour in London, England with Sam Hunter, packages will be available at additional cost, details and registration forthcoming.*

*\*\*\*Optional sewing classes and kits will be available at additional cost, details and registration forthcoming.*

# SEW TRAVELRY

**Sew The World  
Journey With Us And We'll Show You The World And  
Introduce You To New Friends & Creative Skills.**



**Ange Wilson** is a lover of template-based patchwork with a good mix of fussy-cutting. She's the author of "Fussy Cutters Club" for C&T Publishing. She loves showing people how to unlock precision patchwork with templates.



**Jo Westfoot**, the owner of The Crafty Nomad, has been sewing since she was a teenager and teaching for over 10 years. Her style is modern-traditional, incorporating a love of vibrant colors and bold designs. She is passionate about teaching a wide range of techniques to help others love their hobby more. Her happy place is at the machine, free motion quilting! She has been told she's good at breaking things down into manageable chunks that are easier to learn. She wants her students to make progress and it's easier to do that if you take things step by step. You might be wondering why her business is called The Crafty Nomad? Her and the family lived overseas for over 10 years, and it was whilst living abroad that her love for crafting and sewing flourished, all thanks to some crafty friends and her hobby of craft blogging whilst away. Although now back in her native land, England, the business name has remained as it describes her worldly crafting journey well. As well as teaching in-person classes, she also teaches classes and courses in her Online Sewing School and as part of her monthly quilting membership club: The Quilt Hive!



*The Crafty Nomad*  
Patchwork & Quilting Education



[www.thecraftynomad.co.uk](http://www.thecraftynomad.co.uk)

## GET TO KNOW US

**Stephanie Soebbing** the owner of Quilt Addicts Anonymous started quilting just after college, just for something to do. At that time, really not that long ago, there weren't that many good tutorials on the web for quilters getting started. She seriously sewed with a regular presser foot for a year and didn't realize why she sewed a consistent three-eighths-inch seam until she finally took her first quilting class. From then on, she was addicted, and after taking one of two classes a trying out every technique available, she wanted to share her gained knowledge with the rest of the beginners on the Internet struggling to improve their quilting skills and has been doing so for over 15 years. As an established , pattern designer, teacher, podcaster, blogger, and savvy social media marketer, she has grown her on-line audience from around the world and continues to share her passion for fabrics, quilting, and sewing through her popular **YouTube Channel**.



[www.quiltaddictsanonymous.com](http://www.quiltaddictsanonymous.com)

**Teresa Mairal Barreu** grew up in Spain and learned knitting, crochet, and embroidery from her talented mother, who was skilled in sewing and lacemaking. After graduating from university with a degree in French philology and completing a post-graduate degree in computer studies, she juggled a regular job while building an online platform dedicated to sharing her passion for quilting and making it accessible to all. She has also contributed to many publications and shares her ideas and techniques on her website, and popular **YouTube channel**. Crafting is her sanctuary, providing balance to her life. She finds joy in spending her free time sewing and designing, although she often has more crafting ideas in her head than she'll ever have time to bring to life. As the author of the book "Turnabout Patchwork: Simple Quilts with a Twist," which explores the art of creating unique quilt tops by playing with quilt blocks, slicing them up, and repositioning the pieces to craft entirely new designs, when she's not sewing, you can find her engaging in various creative pursuits, such as drawing, painting, sculpting, embroidering, or felting.



*Teresa Down Under*  
MAKING A DIFFERENCE THROUGH QUILT MAKING

[www.teresadownunder.com](http://www.teresadownunder.com)

## TRAVEL WITH US



John Heinrich Ray Evertsen

**WITH US YOU NEVER  
TRAVEL ALONE!**

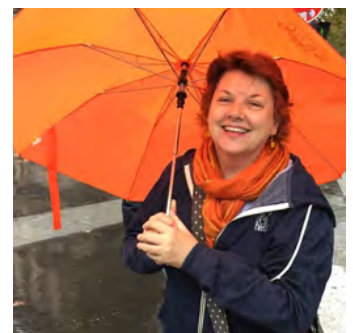
[www.rgetravels.com](http://www.rgetravels.com)

**The RGE Travels** brand is unique as we don't have a "brick and mortar" location so when it's time to meet, we come to you or meet you at a location near you. That's why we are your "Travel Concierge"! As we are all US Veterans at RGE Travels, we try to live by our motto: Thank you for giving us the opportunity to serve you!! It is amazing how 2 people from opposite sides of the USA have so much in common and that commonality is travel. Both of us have lived in multiple states during our youth and we each ignited our travel bug while serving overseas and during deployments in the US Air Force and the US Army. After the military, our careers in the airline industry and security and real estate didn't quell that inquisitive travel bug and in fact pushed us farther into other destinations. With all that travel and our combined destinations, RGE Travels literally has circled the globe to bring this excitement to your travels. This is the reason why we are asking you to join us on another adventure and mingle with people you never met while enjoying the sights, sounds and surroundings because when you travel with us, you're never alone.



**Upon arrival in England,  
come join Sam on an  
"exclusive and limited  
size group" tour and  
see the sights of  
London, art and  
textiles!**

**Sam Hunter** is an award-winning fiber artist, quilt pattern designer, and the owner of Hunter's Design Studio in Portland, Oregon. She started stitching when she was 7 years old and hasn't really stopped since. She is a dual citizen of the UK and USA, and loves creating bespoke tour experiences in Europe. She loves using her formal art training to demystify the formality of art, making it accessible to anyone who wants to come play too!



[www.hunterdesignstudio.com](http://www.hunterdesignstudio.com)



**CLICK LOGO TO REQUEST BOOKING**

*\*This booking form for informational purpose only*

**RESERVATION & TRAVELER INFORMATION FORM**

13 Night Western Europe Transatlantic Cruise from Fort Lauderdale, FL to South Hampton, England aboard the Celebrity Apex, departing May 2, 2024 to May 15, 2024 Sewtravelry's quilting and sewing team Angie Wilson Angle, Stephanie Soebbing, Jo Westfoot, Teresa Mairal Barreu and in London, Sam Hunter!

**Traveler Information**

Print name (first/middle/last) EXACTLY as it appears on the Passport you will be using while traveling.

Traveler 1: \_\_\_\_\_

Traveler 2: \_\_\_\_\_

Address: \_\_\_\_\_

City: \_\_\_\_\_ State: \_\_\_\_\_ ZIP: \_\_\_\_\_

Country: \_\_\_\_\_ Email: \_\_\_\_\_

Cell #1: \_\_\_\_\_ Cell #2: \_\_\_\_\_

Roommate's Name (if not Traveler 2): \_\_\_\_\_

**Type of Stateroom Requested** - \* Per person Double Occupancy

\_\_\_ Inside from \$3387.21\* \_\_\_ Ocean View from \$3525.21\*

\_\_\_ Infinite Veranda from \$3876.21\*

\_\_\_ Single Occupancy specify stateroom type: \_\_\_\_\_

Deposit per person \$750 USD\* Final Payment Due: 2 FEB 24 (Deposit for single occupancy \$1150 USD)

\*\$300 of deposit nonrefundable per person

**Additional Stateroom Options - Rates provided upon request**

\_\_\_ Aqua Class \_\_\_ Sky Suite \_\_\_ Aqua Suite \_\_\_ Sunset Sky Suite

\_\_\_ Penthouse \_\_\_ Royal Suite \_\_\_ Celebrity Suite

Captains Club Number: \_\_\_\_\_

Crown & Anchor Number: \_\_\_\_\_

**\_\_\_ Flight Arrangements Needed**

Airport Departure City: \_\_\_\_\_

Airport Return City: \_\_\_\_\_

Frequent Traveler Number and Airline: \_\_\_\_\_

*\*Air will be booked no later than 90 days before departure. Should any flight interruptions occur, Air by Celebrity will notify cruise ship and provide assistance and alternate travel arrangements.*

**Optional Pre/Post Cruise Packages\***

\_\_\_ 1 - Night Pre-Cruise Transfer/Hotel/Shop Hop Tour - Fort Lauderdale, FL

\_\_\_ 3 - Nights Post-Cruise Transfer/Hotel/Shop Hop & Tour - London, England with Sam Hunter of Hunter's Design Studio (*exclusive and limited space*)

*\*Packages include accommodation, transfer and breakfast. Details, pricing, registration forthcoming.*

**Security Information**

To make your vacation as enjoyable as possible and to assist us in preparing official documentation, please provide the following:

Traveler 1: \_\_\_ Male \_\_\_ Female

Date of Birth (MM/DD/YYYY): \_\_\_/\_\_\_/\_\_\_

If air is included: Add Redress #, if available: \_\_\_\_\_

Passport Number: \_\_\_\_\_ Citizenship: \_\_\_\_\_

City/State/Country of Birth: \_\_\_\_\_

Date of Issue: \_\_\_\_\_ Exp. Date: \_\_\_\_\_

Traveler 2: \_\_\_ Male \_\_\_ Female

Date of Birth (MM/DD/YYYY): \_\_\_/\_\_\_/\_\_\_

If air is included: Add Redress #, if available: \_\_\_\_\_

Passport Number: \_\_\_\_\_ Citizenship: \_\_\_\_\_

City/State/Country of Birth: \_\_\_\_\_

Date of Issue: \_\_\_\_\_ Exp. Date: \_\_\_\_\_

**Passports and VISAS**

All guests must have a valid passport with at least 6 months validity from return date. It is the responsibility of each guest to ensure any applicable visas for all countries visited have been obtained prior to departure. Failure to obtain correct documentation will mean the guest will be unable to participate in particular shore excursions and may be denied boarding and/or entry into certain countries. Meeting necessary passport and visa entry requirements and costs is the sole responsibility of guests.

**Emergency Contact**

Name: \_\_\_\_\_ Relationship: \_\_\_\_\_

Tel: \_\_\_\_\_ Cell: \_\_\_\_\_

**Health**

Some areas on the ship may involve considerable walking, stairs or inclines. Travelers should be in reasonably good health, persons requiring assistance advised to be accompanied by a companion who is capable of and totally responsible for providing assistance. All needs of this nature must be relayed in advance of travel.

Initial here to indicate you have read and understand this: \_\_\_\_\_

\_\_\_ Dietary dietary restrictions, if any: \_\_\_\_\_

\_\_\_ Handicapped /mobility assistance needed - check mark and list below:

\_\_\_\_\_

**Dining:** Early seating with group at specified same tables each night.  
5:30PM -6:00PM\* - hours of dining room operation vary according to ship schedule.

**Price Includes:** 13- Night Western Europe Transatlantic cruise from Fort Lauderdale to South Hampton, England in selected accommodations, taxes, fees and port charges, all meals in complimentary venues on-board ship including 24 hour room service (minimal delivery service charge may apply), classic beverage package: beers, spirits, cocktails, liqueurs, wines by the glass (up to \$10 USD each), sodas, juices, specialty coffees and bottled water, gratuities and unlimited Surf Wi-Fi, event gift, entertainment including shows, discos, comedy clubs, bars, lounges, etc. provided by Celebrity Cruises, age appropriate kids programming for toddlers, kids, and teens, use of all fitness facilities, pools, hot tubs, sports courts, etc. and exclusive daily group dinner dining and meet & greets with Sewtravelry's quilting and sewing team Angie Wilson of Gnome Angle, Latifah Saafir, Jo Westfoot, Teresa Mairal Barreu and in London, Sam Hunter!

*\*To participate in this special group event cruise, cruise booking must be made through RGE Travels.*

**Price Excludes:** Airfare, airport transfers, post/pre hotel/tour, shore excursions, travel insurance, laundry, phone calls, items of a personal nature, optional pre cruise transfer, hotel, tour, and transfer to ship packet, and sewing classes and kits which are to be announced and details forthcoming.

#### Perks:

Non-suite staterooms

All Included: Classic beverage package\*; gratuities and Surf Wi-Fi

**\*CLICK HERE FOR DETAILED LIST OF BEVERAGE TYPES INCLUDED**

Suites - The Retreat, exclusive restaurant, lounge and outside deck area, premium drinks, premium Wi-Fi, tips, and an onboard credit to spend almost any way you like.

#### Travel Insurance:

Travel insurance is available and is strongly recommended. Travel insurance is offered to protect your dollar investment due to unforeseen circumstances and should be purchased within 14 days of your reservation for pre-existing medical condition exclusion waiver protection.

Travel insurance is provided though Travel Guard/TravelEx. For any illness, cancellations or changes, the client will follow Travel Guard's and TravelEx policies and regulations. An optional cost efficient quote will be emailed along with your trip confirmation and can be purchased with your card on file. Alternatively, you're welcome to obtain your own travel insurance.

\_\_\_ Check Mark Acknowledgment

**FOR QUESTIONS CLICK HERE**

#### Terms & Conditions

All payments ticketed by Celebrity Cruises will be refunded, less the applicable cancellation fees as outlined below.

**Deposit:** \$750 deposit \$300 of deposit is non-refundable per person

#### Group Refund and Cancellation Schedule Per Person

90 or more days prior to cruise date - \$300 per person

89 to 75 days - \$300 and 25% cruise fare charge per person

74 to 61 days - \$300 and 50% cruise fare charge per person

60 to 31 days - \$300 and 75% cruise fare charge per person

30 to 0 days -100% cruise fare charge per person

100% cruise fare charge per person for no shows or if cancellation is made after travel is scheduled to begin. No refund for unused portions of the trip.

**Itinerary:** RGE Travels/Holiday Cruises & Tours/Network are not responsible for any changes to itinerary before and during cruise by Celebrity Cruise Lines.

**Booking Terms and Conditions:** These conditions incorporate the basis upon which bookings are accepted by RGE Travels/Holiday Cruises & Tours/Network and Celebrity Cruise Lines. By making a booking you are agreeing to these terms & conditions. Conditions on this page do supersede conditions stated in the Brochure however for additional terms and conditions not stated here please refer to the 'Booking Conditions and other Important Information' pages on website and [www.celebritycruises.com](http://www.celebritycruises.com). These must be studied prior to making the commitment of paying the deposit as they must be referred to. Additional terms and conditions may be applicable to group bookings and will be advised as they become known.

**All guests will be required to adhere to all health and safety protocols established by Celebrity Cruise Lines at time of cruise. For more information concerning present protocols go to [www.celebritycruises.com](http://www.celebritycruises.com).**

**Talent/Artist:** RGE Travels/Holiday Cruises & Tours are not responsible for the content or cancellation of talent/artist before and during cruise.

**I have read, understand and agree to all terms and conditions, including penalties that result in the event of a cancellation.**

Traveler 1: \_\_\_\_\_

Traveler 2: \_\_\_\_\_

Date: \_\_\_\_\_

**Typed full name will be used as signature**

#### RESERVATION PROCESS

**CLICK LOGO TO REQUEST BOOKING**

*\*This booking form for informational purpose only*



Affiliate of

